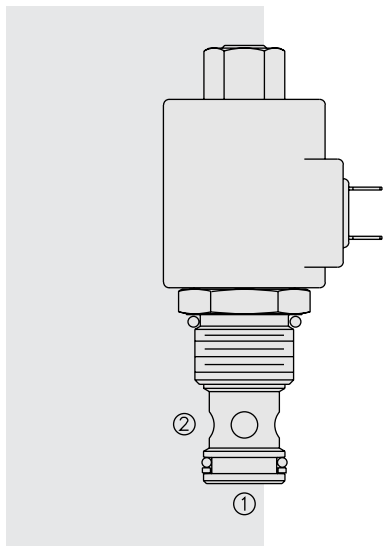


SV12-21 Poppet, 2-Way, Normally Open



DESCRIPTION

A solenoid-operated, 2-way, normally open, poppet-type, screw-in hydraulic cartridge valve, designed to function as a load holding or blocking valve in applications requiring low internal leakage.

OPERATION

When energized, the **SV12-21** acts as a check valve, allowing flow to pass from ① to ②, while blocking flow in the reverse direction.

When de-energized, the poppet lifts to open the ② to ① flow path after overcoming the solenoid force (requires 3.4 to 10.3 bar / 50 to 150 psi). In this mode, flow from ① to ② is severely restricted. If this path is required, see model SV12-23, page 1.054.1.

Operation of Manual Override Option: To override, push and hold override button.

FEATURES

- Continuous-duty rated solenoid.
- Hardened seat for long life and low leakage.
- Optional coil voltages and terminations.
- Efficient wet-armature construction.
- Cartridges are voltage interchangeable.
- Unitized, molded coil design.
- Manual override option.
- Optional waterproof E-Coils rated up to IP69K.
- Cost effective cavity.

RATINGS

Operating Pressure: 240 bar (3500 psi)

Flow: See Performance Chart

Internal Leakage: 0.15 cc/minute (3 drops/minute) max. at 240 bar (3500 psi)

Temperature: -40 to 120°C with standard Buna seals

Coil Duty Rating: Continuous from 85% to 115% of nominal voltage

Response Time: First indication of change of state with 100% voltage supplied at 80% of nominal flow rating: Energized: 110 msec.; De-energized: 40 msec.

Initial Coil Current Draw at 20°C: Standard Coil: 1.67 amps at 12 VDC; 0.18 amps at 115 VAC (full wave rectified).
E-Coil: 1.7 amps at 12 VDC; 0.85 amps at 24 VDC

Minimum Pull-in Voltage: 85% of nominal at 207 bar (3000 psi)

Filtration: See page 9.010.1

Fluids: Mineral-based or synthetics with lubricating properties at viscosities of 7.4 to 420 cSt (50 to 2000 sus); See Temperature and Oil Viscosity, page 9.060.1

Installation: No restrictions; See page 9.020.1

Cavity: VC12-2; See page 9.112.1

Cavity Tool: CT12-2XX; See page 8.600.1

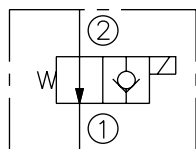
Seal Kit: SK12-2X-T; See page 8.650.1

Coil Nut: Part No. 7004420;

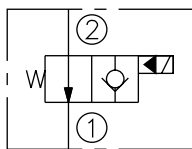
For E-coils manufactured prior to 1-1-04, see page 3.400.1 for coil nut info.

SYMBOLS

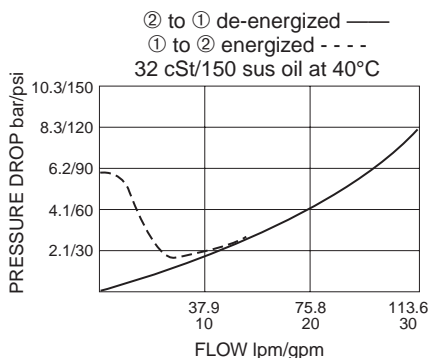
USASI:



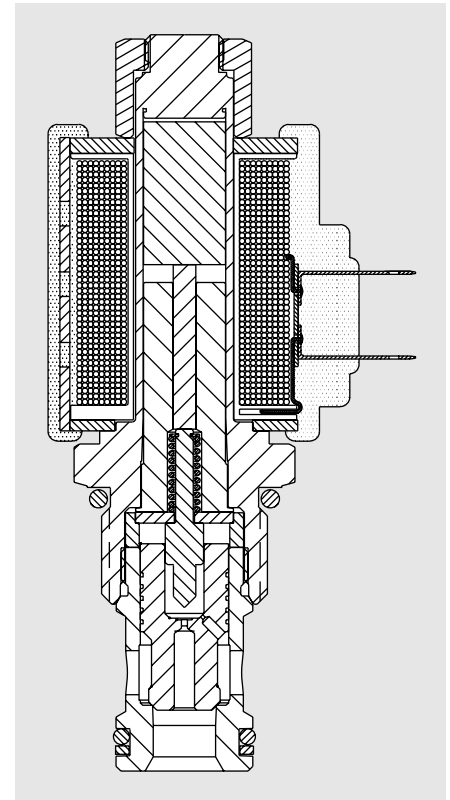
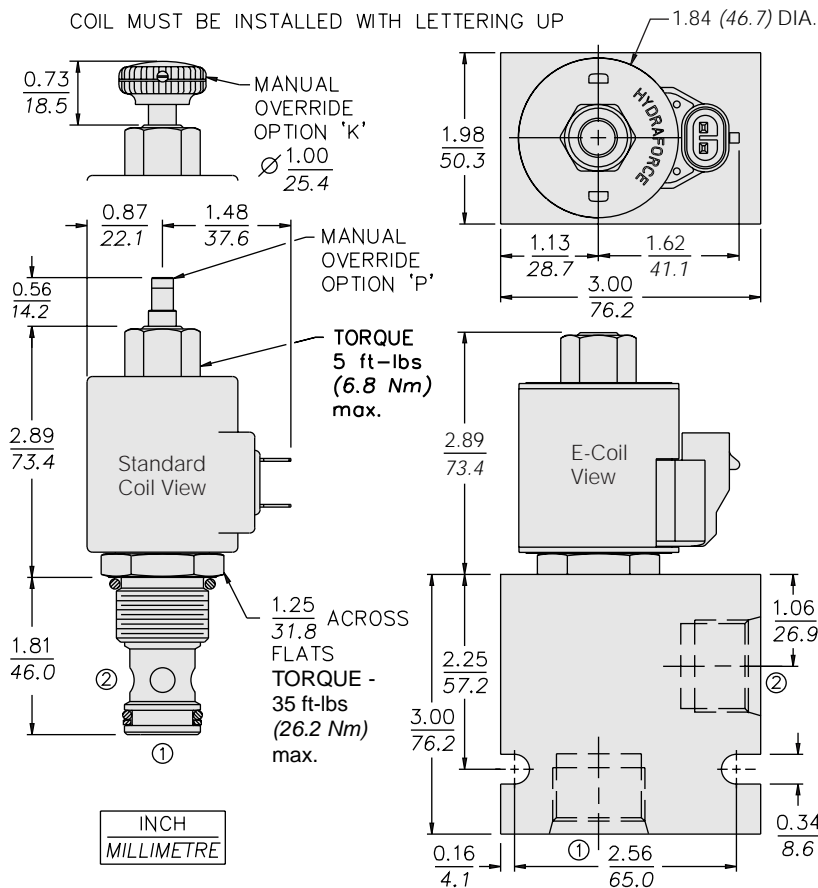
ISO:



PERFORMANCE (Cartridge Only)



DIMENSIONS



MATERIALS

Cartridge: Weight: 0.25 kg. (0.55 lbs.) Steel with hardened work surfaces. Zinc-plated exposed surfaces. Buna N O-rings and polyester elastomer back-up standard.

Standard Ported Body: Weight: 0.57 kg. (1.25 lbs.) Anodized high-strength 6061 T6 aluminum alloy, rated to 207 bar (3000 psi). Ductile iron bodies available; dimensions may differ. See page 8.012.1

Standard Coil: Weight: 0.27 kg. (0.60 lbs.) Unitized thermoplastic encapsulated, Class H high temperature magnetwire. See page 3.200.1

E-Coil: Weight: 0.41 kg. (0.9 lbs.); Fully encapsulated with rugged external metal shell. Rated up to IP69K with integral connectors.

Note: See page 3.400.1 for all E-Coil retrofit applications.

TO ORDER

SV12-21

- Option**
- None (Blank)
 - Manual Override without knob **P**
 - Manual Override with knob **K**

For Manual Override options see page 1.001.1

- Porting**
- Cartridge Only **0**
 - SAE 10 **10T**
 - SAE 12 **12T**
 - SAE 16 **16T**
 - 3/4 in. BSP* **6B**
 - 1 in. BSP* **8B**

*BSP Body; U.K. Mfr. Only

- Seals**
- Buna N (Std.) **N**
 - Fluorocarbon **V**

Voltage Std. Coil

- 0** Less Coil**
- 10** 10 VDC[†]
- 12** 12 VDC
- 24** 24 VDC
- 36** 36 VDC
- 48** 48 VDC
- 24** 24 VAC
- 115** 115 VAC
- 230** 230 VAC

**Includes Std. Coil Nut

[†] DS, DW or DL terminations only.

E-Coil

- 10** 10 VDC
- 12** 12 VDC
- 20** 20 VDC
- 24** 24 VDC

Termination (VDC) Std. Coil

- DS** Dual Spades
- DG** DIN 43650
- DL** Leadwires (2)
- DL/W** Leads w/Weatherpak® Connectors

DR Deutsch DT04-2P

Termination (VAC) Std. Coil

- AG** DIN 43650
- AP** 1/2 in. Conduit

Termination (VDC) E-Coil

- ER** Deutsch DT04-2P (IP69K Rated)
- EY** Metri-Pack® 150 (IP69K Rated)

Coils with internal diode are available. Consult factory.